

Fenelon Gold Chipotle Zone

Inclined Longitudinal (10 m corridor)

Looking Northeast
November 05, 2018

All drill intersections reported
as true width in metres

- Mineralized
Drill Intersections
Chipotle Zone**
- > 10 g/t Au
 - 5-10 g/t Au
 - 3-5 g/t Au
 - 1-3 g/t Au
 - 0.1-1 g/t Au
 - < 0.1 g/t Au
- Hole-ID
g/t Au uncut (g/t Au cut*)
True Width in metres**
- *Assays cut to 140 g/t Au
- Pre-2018 Drilling
 - 2018 Drilling
(assays pending
where not coloured)
- Visible Gold
VG
(where assays
pending)**

-50 m

OPEN
←

-100 m

Section 0990

Section 1000

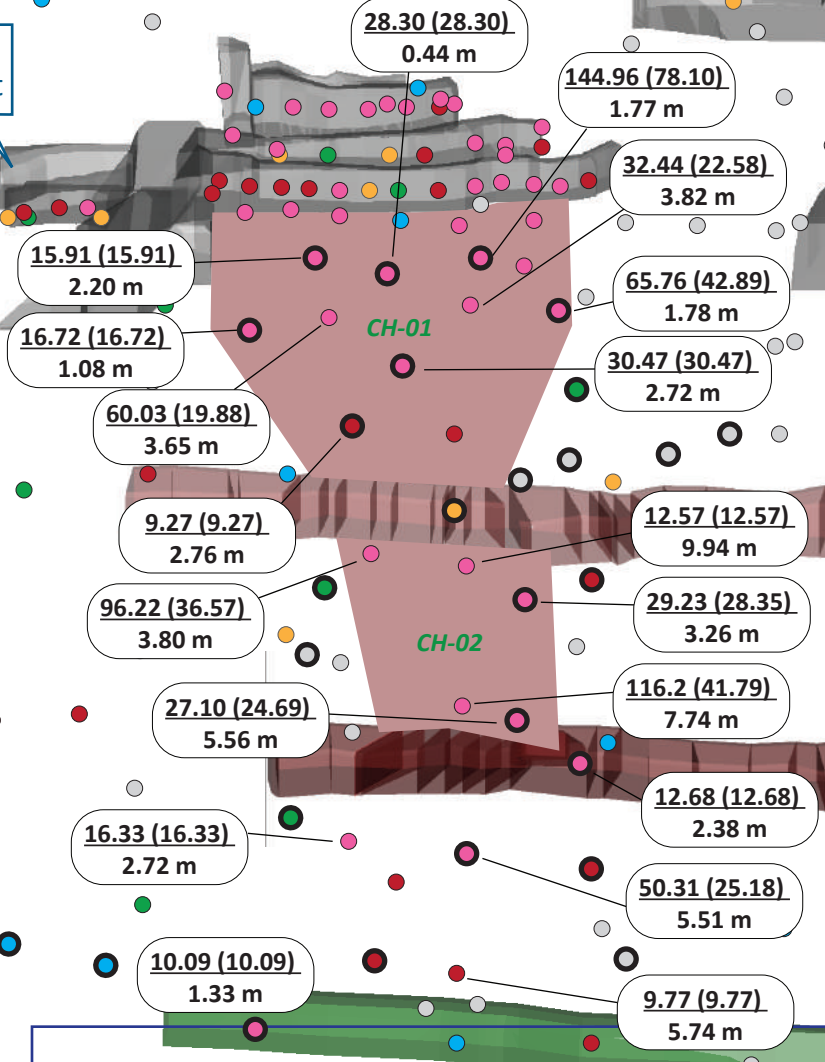
Section 1040

Open Pit

2004 U/G
Development

New 2018 U/G
Development

Planned U/G
Development



L 5228

L 5213

L 5195

L 5180

Underground Drilling
October-November 2018

OPEN
↓

